

# EN LA HUECHA



Basada en la contranza de Vera del Moncayo

B<sup>a</sup>1<sup>a</sup>

JOSE ANTONIO ESTEBAN LAPEÑA

Musical score for guitar in 2/4 time, featuring various fret numbers and techniques such as triplets and bends.

17

3-7-5-3-2-5-3-2 3 3-7-5-3-2-5-3-2 3 9 0-2-0 3-1-3-1-0 3° 0-1 3 0

32

5-7-5-3-2-3-5-2 3 0 2 4 0° 8 3 7 3 0 0 0 0 2 3 2

40

0 3 7 3 0 0 0 0 2 3 2 0 0° 2-3 0 1° 1 2° 3-5 2

48

4° 0 0° 2-3 0 1 5 3-7-5-3-2-5-3-2 3° 0 0° 2-3 0 1° 1 2° 3-5 2

56

0° 0 0 0-2-3-5 7° 3-0° 0 1-1 0 4-4 2 0 0 0-2-3-2-3-5 7° 3-0 0 1° 0 4° 2

64

0° 0 0 0-2-3-5 7° 3-0° 0 1-1 0 4-4 2 0 9 5-7-5-4-2-4-2-0 4 2

80

-2-4-2-0 4-4 0-2 4-5-4-2-4-5-4-2 5-7-5-4-5-7-5-2 4-7-5-4-2-5-4-2 0 7 0° 4-5 7° 4-5

94

-7° 4-5 7° 9-7-5-4-5 7° 4-5 0-0 4-4-2-2-0-0 0-0 4-4-2-2-0-0 0-0 4-4-2-2-0-0 0-0-0-0 4-4-4-4 2-2-2-2-0-0

102

0° 2-4 0 2 2° 4-5-2 4° 0 0° 2-4 0 2 5 4-7-5-4-2-5-4-2 0° 0 5-7-5-4-2-5-2

112

-5-7-5-4-2-4-2-0 4 0-2-4-2-0 2 4-5-4-2-4-5-4-2 5-7-5-4-5-7-5-2 4-7-5-4-2-5-4-2 4-7-5-4-2-5-4-2 4-7-5-4-2-5-4-2 1-2-4-5-4-1-2-4 2-4-5-7-5-2-4-0

121

4 0 2 4 2 4 5 7 7 7 7 7 7 7 7 7 7 7 7 7 7 7 7 7 7 7 5 5-5-5-7-7-7 4 7 4 5 2 2-2-2-4-4-4 5 4 5

*Fine*

# EN LA HUECHA



Basada en la contranza de Vera del Moncayo

B<sup>a</sup>1<sup>a</sup>-a

JOSE ANTONIO ESTEBAN LAPEÑA

Musical score for guitar in 2/4 time, featuring various fret numbers and rhythmic patterns. The score is divided into systems with measure numbers 17, 32, 40, 48, 56, 64, 80, 94, 103, 112, and 120. The piece concludes with a 'Fine' marking.

*Fine*

# EN LA HUECHA



Basada en la contranza de Vera del Moncayo

B<sup>2</sup><sup>a</sup>

JOSE ANTONIO ESTEBAN LAPEÑA

11

19

8

34

42

50

58

66

9

82

7

96

8

111

119

*Fine*

# EN LA HUECHA



Basada en la contranza de Vera del Moncayo

B<sup>2</sup><sup>a</sup>-a

JOSE ANTONIO ESTEBAN LAPEÑA

11

19

8

34

42

50

58

66

9

82

7

96

8

111

119

*fine*

# EN LA HUECHA



Basada en la contranza de Vera del Moncayo

LAUD 1º

JOSE ANTONIO ESTEBAN LAPEÑA

Musical score for LAUD 1º, starting at measure 11. The score is written in 2/4 time and includes various guitar techniques such as triplets, slurs, and fingerings. Measure numbers 11, 21, 31, 48, 58, 68, 78, 88, 98, and 108 are indicated at the beginning of their respective staves. The piece concludes with the word "Fine" in a decorative script.

*Fine*



# EN LA HUECHA



Basada en la contranza de Vera del Moncayo

LAUD 2º

JOSE ANTONIO ESTEBAN LAPEÑA

8

11

21

31

48

58

68

78

91

101

119

*Fine*





57

65

73

81

89

97

105

113

121

*Fine*

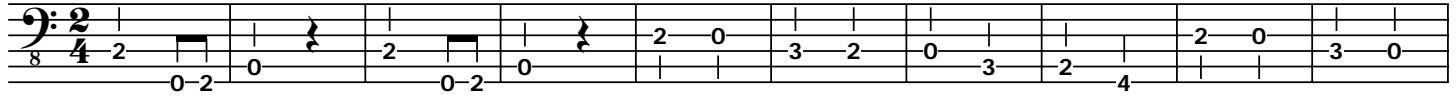
# EN LA HUECHA



Basada en la contranza de Vera del Moncayo

## BAJO

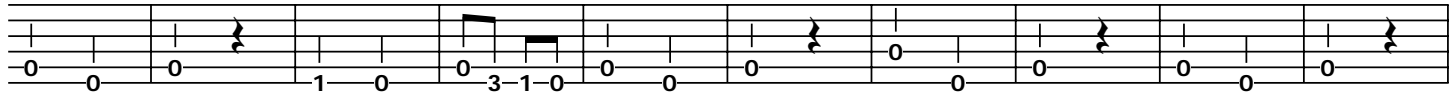
JOSE ANTONIO ESTEBAN LAPENA



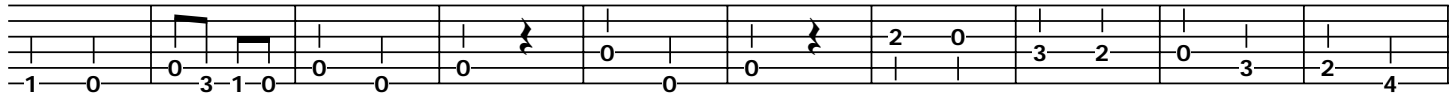
11



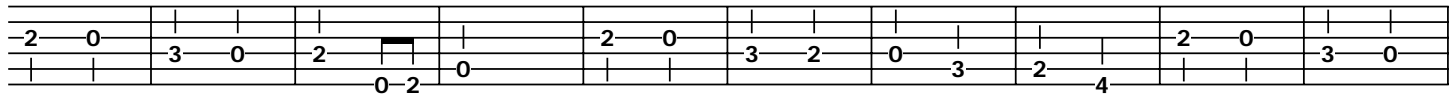
21



31



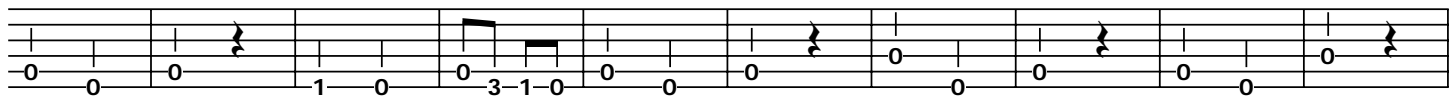
41



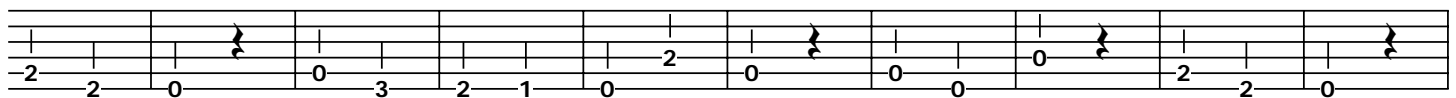
51



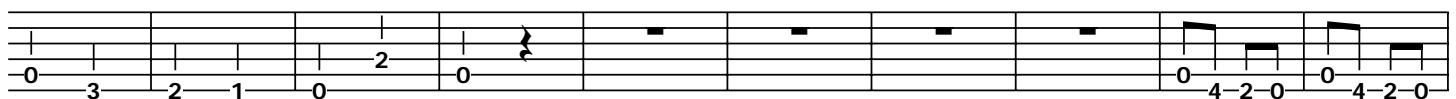
61



71



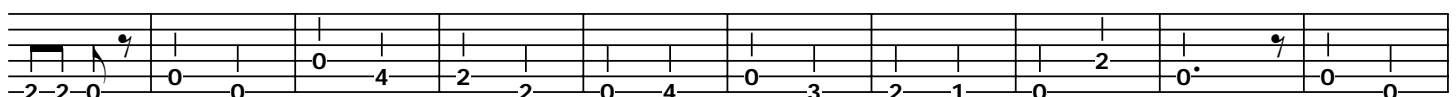
81



91



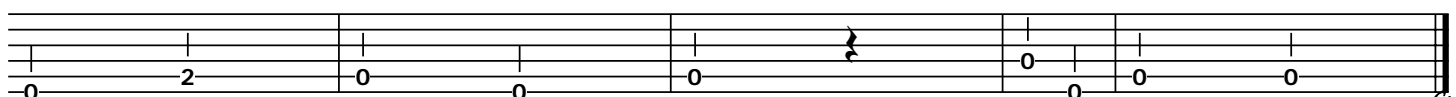
101



111



121



*Fine*